

LIBRARY CLUB. SAC. SCMS-NOIDA PRESENTS

# LIBRARY MONTHLY

**WINTER IS COMING!**



## More in this issue

WINTER WATCH GUIDE  
CARTOONISH LIBRARY  
RIDDLES and WINNERS  
SOMETHING'S COOKING

## My Winter Aesthetic

Article by Ms. Rhea Dube (2018-21)

Are you embracing the cold or do you long for the warmer days? Winter means different to all of us, and having grown up in the glorious capital of India, I resented waking up and then waiting for my school bus in the piercing cold of Delhi aka "Dilli ki Sardi". But as November came to stay, and I took out my warm pajamas, I realized with amazement that I was hoping for the gray skies and cold evenings – even reflecting on winter's past not with bitterness, but with nostalgia. Perhaps things offer a sweeter impression in memory, more fuzzy and soft-tinted. For the first time in a very long time, winter feels like a homecoming! I look forward to putting on my beanie, hugging my bright comfy sweater, and pretend like I'm in a sad movie. Take the metro ride to the heart of the city, Connaught Place, and peering in the brightly lit windows, there is something so blissful about the memory of sipping a steaming cup of coffee in a cozy café with a friend or a book. These winter days hold such a delicate finiteness that the summer days will never own. Everything I hope for the returning chilly weather are moments to rediscover new memories while reminiscing the old favorites.

## SOMETHING'S COOKING

### HOT CHOCOLATE

#### Ingredients

- 2 cups whole milk
- 2 tablespoon sugar
- 1 cup chocolate chopped
- splash of vanilla extract (optional)
- whipped cream (optional)
- marshmallows (optional)

#### Instructions

- Combine milk and sugar in a small saucepan and place on the stovetop over medium heat.
- While the milk is heating place the chopped chocolate in the microwave and heat for 30 seconds. Take the chocolate out and stir it. Return to microwave and heat for another thirty seconds, remove and stir. Continue to heat and stir the chocolate in 30 second intervals until just melted.
- When the milk reaches the scalding point (180 degrees F, with bubbles on the side), turn off the heat and add the melted chocolate, whisking to combine. Add the vanilla extract now, if desired. Top with whipped cream or marshmallows if using, and enjoy!

# LIBRARY'S WATCHING GUIDE

## GAME OF THRONES

Nine noble families wage war against each other in order to gain control over the mythical land of Westeros in this TV series based on "A Song of Ice and Fire", a series of fantasy novels by the American author George R. R. Martin.



## LOVE, SIMON

A funny, heartfelt, and truly touching teen romantic comedy based on the YA novel "Simon vs the homo Sapiens agenda" by Becky Albertalli.



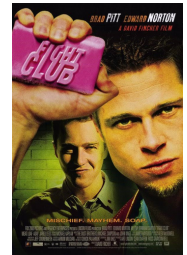
## MURDER OF THE ORIENT EXPRESS

A mystery film based on a detective novel by English writer Agatha Christie featuring the Belgian detective Hercule Poirot.



## FIGHT CLUB

A Based on a 1996 novel by Chuck Palahniuk. It follows the pre-millennial tension and even without the whiplash revelation, the film is a wild ride.



## INTO THE WILD

The movie questions what it is to be human, and what happens when we admire nature more than humanity is based on a 1996 non-fiction book written by Jon Krakauer.



## Star Member of the month

*"A club that has inspired me and taught me to never shy away from sharing my story. And the people are the equivalent of a rainbow on cloudy days."*

**Ms. Rhea Dube**

PRN: 18021021231



## RIDDLES

- First think of the person who lives in disguise, Who deals in secrets and tells not but lies, Next tell me what's always the last thing to mend, The middle of middle and end of the end? And finally give me the sound often heard, During the search for a hard-to-find word. Now string them together, and answer me this, Which creature would you be unwilling to kiss?

- Not chest or box is now discussed. Money can be held in it, but just as we test its metal, within it there is rust.

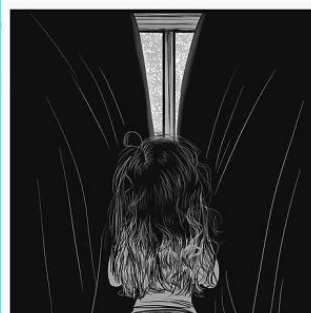
Mail us your answers at [libraryclub@scmsnoida.ac.in](mailto:libraryclub@scmsnoida.ac.in) , to get featured in the next issue of "LIBRARY MONTHLY"

## Last edition's WINNERS

Reeva Mathur (2018-21) 18021021230  
Saniya Chopra (2018-21) 18021021271  
Nikunj Singla (2020-23) 20021021421

(Answers: R & HEROINE)

Cartoonish LIBRARY @sweater season



(c) c.cassandra